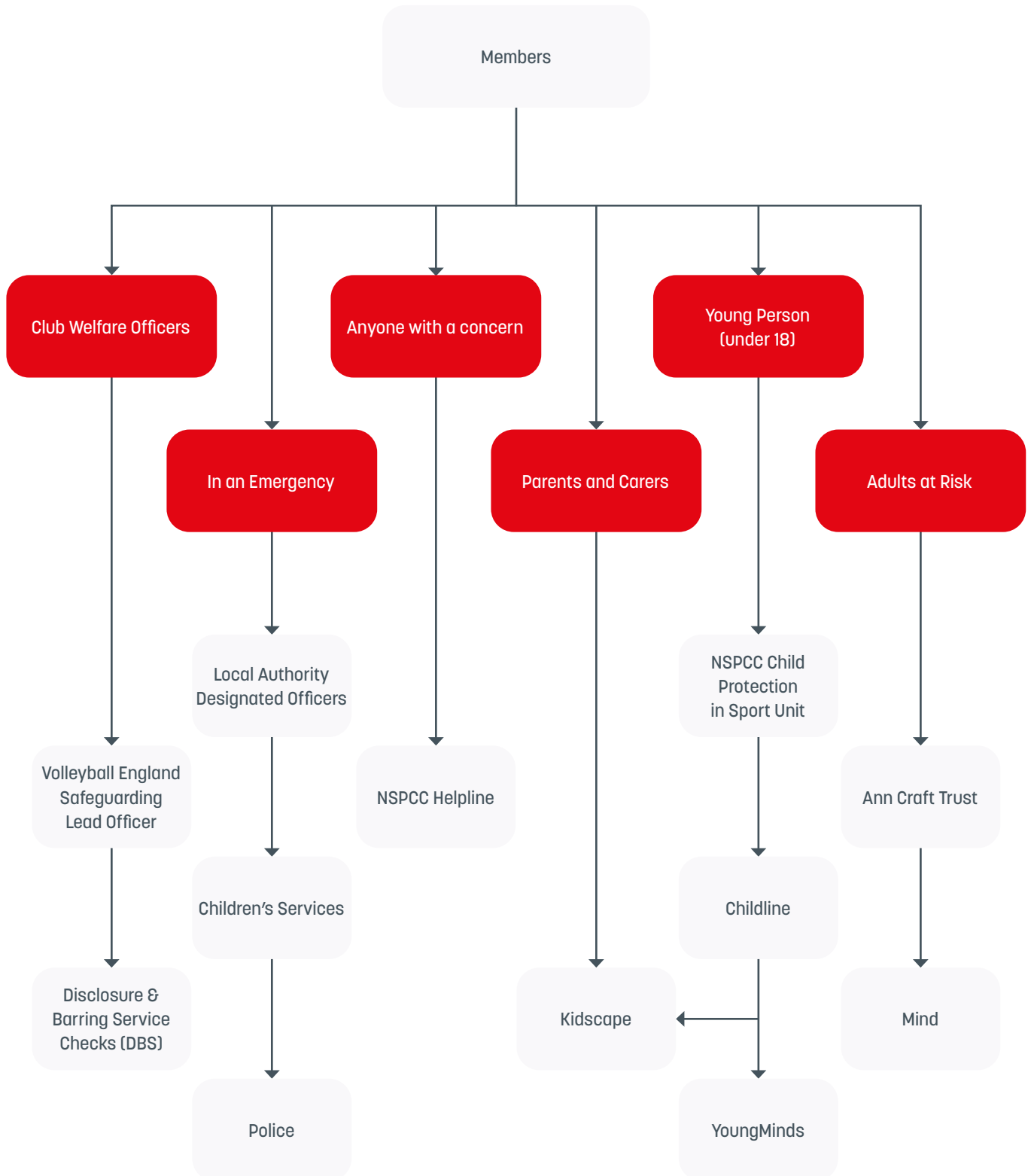


SECTION 6:

CONTACT INFORMATION



CLUB WELFARE OFFICERS

VOLLEYBALL ENGLAND SAFEGUARDING LEAD OFFICER

Rob Payne
01509 974698

safeguarding@volleyballengland.org

The Volleyball England point of contact for safeguarding practical advice, concerns and general enquiries.

IN AN EMERGENCY

LOCAL AUTHORITY DESIGNATED OFFICERS

There is no central database for the individuals in this role. Therefore to find out your Local Authority Designated Officer search the role online for your local authority area or contact safeguarding@volleyballengland.org.

Provide advice and guidance to employers and voluntary organisations that have concerns about a person who may have behaved inappropriately when working or volunteering with children and young people.

POLICE

999 - For incidents relating to crime.

ANYONE WITH A CONCERN

NSPCC HELPLINE

help@nspcc.org.uk

nspcc.org.uk

Staffed by trained professionals who can provide expert advice and support. The NSPCC are here if you're concerned about a child, if you're a parent or carer looking for advice, or if you're a professional in need of information and guidance.

DISCLOSURE & BARRING SERVICE CHECKS (DBS)

01509 974700

membership@volleyballengland.org

The Volleyball England office contact to enquire and gain status updates on DBS applications.

CHILDREN'S SERVICES

There is no central database for the individuals in this role. Therefore to find out the contact details of Children's Services in your area search online or contact safeguarding@volleyballengland.org.

Children's Services have a statutory obligation to safeguard and promote the welfare of vulnerable children and adults and can provide a wide range of services to children and their parents.

PARENTS AND CARERS

KIDSCAPE

0207 730 3300

kidscape.org.uk

An organisation committed to helping prevent child bullying. Offering friendly, impartial, nonjudgemental information, advice and support to parents and carers.

YOUNG PERSON (UNDER 18)

CHILDLINE

0800 1111

[childline.org.uk](https://www.childline.org.uk)

Free national telephone helpline for children 24 hrs.

NSPCC HELPLINE

0808 800 5000

help@nspcc.org.uk

[nspcc.org.uk](https://www.nspcc.org.uk)

Staffed by trained professionals who can provide expert advice and support. The NSPCC are here if you're concerned about a child, if you're a parent or carer looking for advice, or if you're a professional in need of information and guidance.

ADULTS AT RISK

ANN CRAFT TRUST

0115 951 5400

[anncrafttrust.org](https://www.anncrafttrust.org)

A national charity which exists to minimise the risk of abuse of adults. Through pioneering training, practice reviews and contributing to world-leading research, they support organisations to safeguard adults and minimise the risk of harm.

KIDSCAPE

0207 730 3300

[kidscape.org.uk](https://www.kidscape.org.uk)

An organisation committed to helping prevent child bullying. Offering friendly, impartial, nonjudgemental information, advice and support to parents and carers.

YOUNGMINDS

www.youngminds.org.uk/about-us/

The UK's leading charity fighting for children and young people's mental health.

YOUNGMINDS PARENTS HELPLINE

0808 802 5544

Support for parents and carers who are concerned about their child or young person's mental health.

MIND

020 8519 2122

[mind.org.uk](https://www.mind.org.uk)

An organisation providing advice and support to empower anyone experiencing a mental health problem. Mind campaigns to improve services, raise awareness and promote understanding.

VOLLEYBALL ENGLAND CASE MANAGEMENT GROUP (CMG)

PURPOSE

- 1** To make decisions on the initial approach to all reported cases related to the safeguarding and protection of young people and adults. Principally these relate to the 'route' a case will take internally and/or via external referral to statutory agencies but may also include making decisions in relation to concerns arising from information gathered through the recruitment process.
- 2** To make initial decisions as to what level each case will be dealt with, e.g. minor poor practice which may be referred back to a club's complaints/disciplinary procedures with advice, or suspected abuse of a young person, which requires dealing with at national level through disciplinary procedures.
- 3** To advise others within the organisation about actions they may need to take, such as initiating disciplinary proceedings.
- 4** To monitor and review progress on all cases and to identify any trends emerging which may require a review/revision of existing policies/procedures.



VOLLEYBALL ENGLAND CASE MANAGEMENT GROUP (CMG)

PRINCIPLES

1 Independence

It is essential that the group is empowered by the organisation to make decisions on the 'route' that cases will take without influence or prejudice by others in the organisation.

2 Confidentiality

All safeguarding and protection matters must be regarded as highly confidential and not for disclosure outside the group unless so agreed, on a strictly need to know basis, in line with the Data Protection Act and Human Rights Act.

3 Expertise

The group should be led by the Volleyball England Safeguarding Lead Officer. The group should include people who have relevant knowledge and expertise to enable the group to fulfil its purpose such as HR/Personnel Manager/Clerk to Disciplinary Panel etc. It is recommended that at least one member of the group is external to the organisation's management group and has current professional safeguarding knowledge and experience.

4 Equity and Anti-Discriminatory Practice

All decisions made by the group need to be fair, open and transparent. An open mind needs to be kept in all cases until they have been investigated and concluded. The group should be guided by the organisation's equity policy and the principle that all young people and adults have the right to protection from abuse regardless of their age, ability or disability, gender, racial origin, religious belief, social status or sexual orientation.

5 The Welfare of the Young Person and Adult at Risk is Paramount

This principle is enshrined in the Children's Act 2004. In any decision taken by the group, the welfare of the young person and adult at risk is the paramount concern and takes precedence over those of any adult where there is a perceived conflict of interest.

THE CMG IS TO COMPRISE AT LEAST THREE OF THE FOLLOWING:

- Volleyball England Solicitor (if appropriate).
- Deputy/Chief Executive Officer (if appropriate).
- Club Welfare Officer (if available).
- Regional Safeguarding Officer.
- Volleyball England Safeguarding Lead Officer.
- An individual with a safeguarding background from an external organisation.
- Person with expertise in the field of abuse to which the incident may relate (e.g. Children's Social Care or Police).
- The appropriate Working Group Lead i.e. competitions lead for league-related matters.

For further information regarding the CMG and its role please contact the Safeguarding Lead Officer.